



Islamic School of Irving

COVID-19 Plan for School Re-Opening

2020-2022

ISI COVID-19 Taskforce

Dr. Tarek Salman

Dr. Afia Umber

Dr. Mohammad Qasim

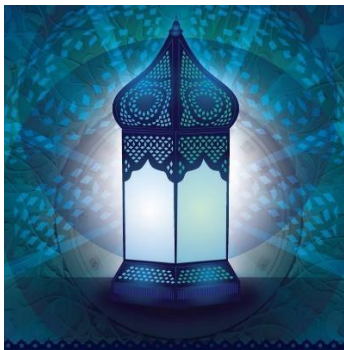
Sr. Shahnaz Chowdhury, Principal

Sr. Anita Abrashid, LT

Sr. Brenda Bleakney, LT

Br. Khalil Jourane, LT

Sr. Mouna Ajjaoui, Nurse



*This Handbook is subject to change as needed



Islamic School of Irving

College Preparatory

2555 Esters Rd. Irving, TX 75062 Phone: 972-812-2230

Today's Learners, Tomorrow's Leaders



Shahnaz Chowdhury, MS. Principal

Dr. Leila Kayed, Head of School

Prophetic Guidance Against Pandemics

Prophetic du'a to recite before leaving the house

بِسْمِ اللَّهِ تَوَكَّلْتُ عَلَى اللَّهِ، وَلَا حَوْلَ وَلَا قُوَّةَ إِلَّا بِاللَّهِ

Bismillaahi tawak'altu 'alAllaah, wa laa hawla wa laa quwwata illaa billaah

In the Name of Allah, I place my trust in Allah, and there is no strength to do good nor any power to resist evil except by (the Assistance of) Allah.

"Whoever recites this du'a, it is proclaimed to him, 'You have been guided, you have been sufficed (i.e. your needs have been taken care of), you have been protected' and Shaytan leaves his path."

Prophetic du'a for protection against diseases

اللَّهُمَّ إِنِّي أَعُوذُ بِكَ مِنَ الْبَرَصِ وَالْجُنُونِ وَالْجَذَامِ وَمِنْ سَيِّئِ الْأَسْقَامِ

Allaahumma innee a'oodhu bika minal barasi wal-junooni wal-judhaami
wa min say'yi' il-asqaam

O Allah, I seek Your protection from leukoderma, insanity, leprosy and from evil diseases.

Prophetic du'a for protection against calamities

اللَّهُمَّ إِنِّي أَعُوذُ بِكَ مِنْ جَهْدِ الْبَلَاءِ، وَدَرَكِ الشَّقَاءِ، وَسُوءِ الْقَضَاءِ، وَشَمَاتَةِ الْأَعْدَاءِ

Allaahumma innee a'oodhu bika min jahdil balaa', wa darakish'shaqaa', wa soo-il qadaa', wa shamaatatil 'a-daa'

O Allah, I seek Your protection from the difficulties of severe calamities, from a bad fate, from a bad end and from the malicious joy of enemies.



Islamic School of Irving

College Preparatory

2555 Esters Rd. Irving, TX 75062 Phone: 972-812-2230

Today's Learners, Tomorrow's Leaders



Shahnaz Chowdhury, MS. Principal

Dr. Leila Kayed, Head of School

This handbook is designed to help all students, parents, staff, faculty, and administration understand the strategies and protocols that will be followed to address the COVID-19 school re-opening policies and procedures.

As the situation keeps evolving, we will closely follow the TEA and CDC guidelines to minimize health and safety risks of all concerned. This document will be periodically updated as needed to ensure that the school does not compromise the safety of students, parents and staff as well. An **ISI Covid-19 Task Force** has been formed to ensure that we are taking all possible steps for safety and get a perspective from all stakeholders. Members include, but not limited to, representatives from parents, Lead teachers, and physicians.

This handbook does not supersede the ISI Student & Parent Handbook, or Teacher Handbook and policies. It is a guide to a brief explanation of school policies and procedures related to ISI preparedness. These policies and procedures can change at any time if deemed necessary by the administration.

Our goal is to be proactive in assessing the risks on a regular basis and adjusting our strategies to ensure the safety and well-being of our students, parents and staff. This handbook will outline the plan to reopen the school based on the current information and data available from Local Authorities, TEA, CDC and the Governor's Office.

Child has any of these symptoms of COVID-19

Fever 100.4 or above, Runny nose, Sore throat, Nasal Congestion, New or worsening cough, Shortness of breath, Fatigue/Malaise, Headache, Body ache, Nausea, Vomiting, Diarrhea, Loss of taste or smell.

If a child or staff with symptoms was present in the room within 48 hours prior to symptoms that room must be closed, and staff and children need to be sent home and wait till test results for symptomatic child or staff are negative or must self-quarantine for 14 days if no test is taken

If
you do get a COVID-19 test and results are negative
Then
You only need to be symptom free for 24hrs without the aid of medication
And
the room can open back up and the other children and staff without symptoms can attend

If
you do not get a COVID-19 test
Then
You must be out for 14 days from the start of symptoms
And
the room must remain closed and the other children and staff must also be out for 14 days

If
you do not get a COVID-19 test
Then
You must be out for 14 days from the start of symptoms
And
the room must remain closed and the other children and staff must also be out for 14 days



Islamic School of Irving

College Preparatory

2555 Esters Rd. Irving, TX 75062 Phone: 972-812-2230

Today's Learners, Tomorrow's Leaders



Shahnaz Chowdhury, MS. Principal

Dr. Leila Kayed, Head of School

Health Considerations:

The virus that causes COVID-19 can infect people of all ages, and school system leaders should do everything feasible to keep students, teachers, staff, and our communities safe. That said, research from the Centers for Disease Control (CDC), among others, has found that while children do get infected by COVID-19 and some severe outcomes have been reported in children, relatively few children with COVID-19 are hospitalized or have severe symptoms. Furthermore, the American Academy of Pediatrics notes that COVID-19 risks must be balanced with the need for children to attend school in person, given that lack of physical access to school leads to a number of negative consequences, placing “children and adolescents at considerable risk of morbidity, and in some case, mortality.” While it is not possible to eliminate all risk of furthering the spread of COVID-19, the school will take steps to reduce the risks to students, teachers, staff, and their families significantly.

This guidance document contains information on four sets of practices that minimize the likelihood of viral spread:

I. Parental Notices

One week prior to the start of on campus activities and instruction, a summary of the plan will follow to mitigate COVID-19 spread. This will be posted on the school webpage, hall monitors, and school/homeroom teacher weekly newsletter. This document, with reopening plans, is not approved by any government entity. Administration will designate a staff person as responsible for responding to COVID-19 concerns and clearly communicate for all school staff and families how to contact them.

II Attendance and Enrollment

1. Per Texas Education Code (TEC), §25.092, students must attend 90% of the days a course is offered (with some exceptions) in order to be awarded credit for the course and/or to be promoted to the next grade. This requirement remains in force during the 2020-21 school year.
2. Given the public health situation, student attendance may be earned through the delivery of virtual instruction
3. Any parent may request that their student be offered virtual instruction. If a parent who chooses virtual instruction wants their child to switch to an on-campus instructional setting, they can do so, but school will limit these transitions to occur only at the end of a grading period, if it will be beneficial to the student’s instructional quality.
4. School will take daily on-campus and virtual attendance each day.

III PREVENT: Practices to Prevent the Virus from Entering the School

Screening Questions for COVID-19 before Campus Access

1. ISI requires teachers and staff to self-screen for COVID-19 symptoms before coming onto campus each day. Symptoms are listed at the end of this document. The self-screening should include teachers and staff taking their own temperature. Teachers and staff must report to the school system if they themselves have COVID-19 symptoms or are lab confirmed with COVID-19, and, if so, they must remain off campus until they meet the criteria for re-entry as noted below. Additionally, they must report to the school if they have had close contact with an individual who is lab-confirmed with COVID-19, as defined at the end of this document, and, if so, must remain off campus until the 14-day incubation period has passed.



Islamic School of Irving

College Preparatory

2555 Esters Rd. Irving, TX 75062 Phone: 972-812-2230

Today's Learners, Tomorrow's Leaders



Shahnaz Chowdhury, MS. Principal

Dr. Leila Kayed, Head of School

2. Parents must ensure they do not send a child to school on campus if the child has COVID-19 symptoms (as listed in this document) or is lab-confirmed with COVID-19, and instead should opt to receive remote instruction until the below conditions for re-entry are met. Parents may also opt to have their students receive remote instruction if their child has had close contact with an individual who is lab-confirmed with COVID-19 until the 14-day incubation period has passed. School systems may consider screening students for COVID-19 as well. Screening is accomplished by asking questions by phone or other electronic methods and/or in person. The screening questions will also be asked of a student's parent if that parent will be dropping off or picking up their child from inside the school.

3. Excluding parental drop-off and pick-up, before visitors are allowed onto campus, school will screen all visitors to determine if the visitors have COVID-19 symptoms (as listed in this document) or are lab-confirmed with COVID-19, and, if so, they must remain off campus until they meet the criteria for re-entry as noted below. Additionally, school will screen to determine if visitors have had close contact with an individual who is lab-confirmed with COVID-19, and, if so, they must remain off campus until the 14-day incubation period has passed. When practical, screening questions could be supplemented with temperature checks of adults.

Individuals Confirmed or Suspected with COVID-19:

1. Any individuals who themselves either: (a) are lab-confirmed to have COVID-19; or (b) experience the symptoms of COVID-19 (listed below) must stay at home throughout the infection period, and cannot return to campus until the school system screens the individual to determine any of the below conditions for school re-entry have been met:
 - o In the case of an individual who was diagnosed with COVID-19, the individual may return to school when all three of the following criteria are met:
 - i. at least three days (72 hours) have passed since recovery (resolution of fever without the use of fever-reducing medications);
 - ii. the individual has improvement in symptoms (e.g., cough, shortness of breath); and
 - iii. at least ten days have passed since symptoms first appeared.
 - o In the case of an individual who has symptoms that could be COVID-19 and who is not evaluated by a medical professional or tested for COVID-19, such individual is assumed to have COVID-19, and the individual may not return to school until the individual has completely recovered.
 - o If the individual has symptoms that could be COVID-19 and wants to return to school before completing the above stay at home period, the individual must either (a) obtain a medical professional's note clearing the individual for return based on an alternative diagnosis or (b) receive two separate confirmations at least 24 hours apart that they are free of COVID via acute infection tests at an approved COVID-19 testing location found at <https://tdem.texas.gov/covid-19/>.



Islamic School of Irving

College Preparatory

2555 Esters Rd. Irving, TX 75062 Phone: 972-812-2230

Today's Learners, Tomorrow's Leaders



Shahnaz Chowdhury, MS. Principal

Dr. Leila Kayed, Head of School

Identifying Possible COVID-19 Cases in school

- o School will immediately separate any student who shows COVID-19 symptoms while at school until the student can be picked up by a parent or guardian.
- o Schools will clean the areas used by the individual who shows COVID-19 symptoms while at school (student, teacher, or staff) as soon as is feasible.
- o Students who report feeling feverish will be given an immediate temperature check to determine if they are symptomatic for COVID-19.

IV. RESPOND: Practices to Respond to a Lab-Confirmed Case in the School

Required Actions if Individuals with Lab-Confirmed Cases Have Been in a School

2. If an individual who has been in a school is lab-confirmed to have COVID-19, the school must notify its local health department, in accordance with applicable federal, state and local laws and regulations, including confidentiality requirements of the Americans with Disabilities Act (ADA) and Family Educational Rights and Privacy Act (FERPA).
3. School will close off areas that are heavily used by the individual with the lab-confirmed case (student, teacher, or staff) until the non-porous surfaces in those areas can be disinfected, unless more than 3 days have already passed since that person was on campus.
4. Consistent with school notification requirements for other communicable diseases, and consistent with legal confidentiality requirements, school will notify all teachers, staff, and families of all students in a school if a lab-confirmed COVID-19 case is identified among students, teachers or staff who participate on any on campus activities.

V. MITIGATE: Practices to Mitigate the Likelihood of COVID-19 Spread Inside the School

Operational Considerations:

Health and Hygiene Practices: General

1. School will have hand sanitizer at each entrance and all classrooms and offices.
2. Students, teachers, staff, and campus visitors will be encouraged to sanitize and/or wash hands frequently.
 - School will have students engage in hand washing for at least 20 seconds at least two times each day, in addition to being encouraged to wash hands after using the restroom and before eating.
 - School will go over good hand washing techniques.
 - Students, teachers, staff, and campus visitors will be encouraged to cover coughs and sneezes with a tissue, and if not available, covered in their elbows. Used tissues should be thrown in the trash, hands should be washed immediately with soap and water for at least 20 seconds, or hand sanitizer should be used.



Islamic School of Irving

College Preparatory

2555 Esters Rd. Irving, TX 75062 Phone: 972-812-2230

Today's Learners, Tomorrow's Leaders



Shahnaz Chowdhury, MS. Principal

Dr. Leila Kayed, Head of School

3. School will institute more frequent cleaning practices, including additional cleaning by janitorial staff, as well as provide the opportunity for children to clean their own spaces before and after they are used, in ways that are safe and developmentally appropriate.
 - School will arrange for additional cleaning and disinfecting of surfaces that are touched in common throughout the day. This would include objects such as door handles, common tables/desks, shared supplies such as art supplies, and high touch devices such as shared laptops or tablets.
 - Whenever possible, schools should open windows or otherwise work to improve air flow by allowing outside air to circulate in the building.
4. On the first day a student attends school, school will provide instruction to students on appropriate hygiene practices.

Health and Hygiene Practices: Masks

1. Masks include non-medical grade disposable face masks, cloth face coverings (over the nose and mouth), or full-face shields to protect eyes, nose, and mouth.
2. Schools are required to comply with the governor's executive order regarding the wearing of masks.
3. It may be impractical for students to wear masks or face shields while participating in some extracurricular activities.

When it is impractical for students to wear masks or face shields during those activities, school must require students, teachers, staff, and visitors to wear masks or face shields when entering and exiting facilities and practice areas and when not actively engaging in those activities. School may, for example, allow students who are actively exercising to remove masks or face shields. If the student is not wearing a face mask for some reason, the student must maintain at least six feet of distance from other students, teachers, and staff who are not wearing masks or face shields. However, it is a requirement for students, teachers, and staff to wear masks or face shields as they arrange themselves in positions that will allow them to maintain safe distancing.

Student-Teacher Groupings

Where feasible without disrupting the educational experience, encourage students to practice social distancing.

1. In classroom spaces that allow it, placing student desks a minimum of six feet apart when possible.
2. In classrooms where students are regularly within six feet of one another, plan for more frequent hand washing and/or hand sanitizing and allow increased airflow from the outdoors is possible.

Use of Non-Classroom Spaces

1. When feasible and appropriate (for example, in physical education classes as weather permits), it is preferable for students to gather outside, rather than inside, because of likely reduced risk of virus spread outdoors.
2. ISI may continue to offer extracurricular activities, at their discretion and consistent with the guidance in this document.
3. ISI will have in place a plan for entry, exit, and transition procedures that reduce large group gatherings (of students and/or adults) in close proximity. An option will be staggering school start and end times, assigning students to entries to ensure even distribution of students entering/exiting at each door, providing guidance to students to enter one at a time and wait six feet apart outside the entrance, and, where appropriate, encouraging parents to remain outside during drop-off and pick-up.
4. Morning assembly and Adhkaar will be held in the homeroom classes.



Islamic School of Irving

College Preparatory

2555 Esters Rd. Irving, TX 75062 Phone: 972-812-2230

Today's Learners, Tomorrow's Leaders



Shahnaz Chowdhury, MS. Principal

Dr. Leila Kayed, Head of School

5. School will be adding dividers between bathroom sinks, especially when students cannot be at least six feet apart while using the sinks.
6. Students will be eating lunch at their desks.

Visits to Schools

- o Parents and other adults can visit schools, as per school policies. During these visits, parents and other visitors must follow virus prevention and mitigation requirements of the school.
- o These visits will be restricted to only those essential to school operations.

Staffing

1. All ISI employees must continue to meet the work expectations set by terms of their contracts.
2. School teachers and staff will be trained specifically on the protocols outlined in this document and the practices adopted by ISI.
3. School will attempt to reduce in-person staff meetings or other opportunities for adults to congregate in close settings. When those meetings are necessary and cannot be done via electronic means, everyone must follow the mask protocols in this guidance, remain at least 6 feet apart where feasible, consider the use of dividers, and consider whether increased airflow from the outdoors is possible in those setting.

COVID-19 Symptoms

In evaluating whether an individual has symptoms consistent with COVID-19, the following questions will be considered:

Have they recently begun experiencing any of the following in a way that is not normal for them?

- Feeling feverish or a measured temperature greater than or equal to 100.0 degrees Fahrenheit
- Loss of taste or smell
- Cough
- Difficulty breathing
- Shortness of breath
- Headache
- Chills
- Sore throat
- Shaking or exaggerated shivering
- Significant muscle pain or ache
- Diarrhea

Close Contact

This document refers to “close contact” with an individual who is lab-confirmed to have COVID-19. Close contact is determined by an appropriate public health agency. For clarity, close contact is defined as:

- a. being directly exposed to infectious secretions (e.g., being coughed on while not wearing a mask or face shield);
- or



Islamic School of Irving

College Preparatory

2555 Esters Rd. Irving, TX 75062 Phone: 972-812-2230

Today's Learners, Tomorrow's Leaders



Shahnaz Chowdhury, MS. Principal

Dr. Leila Kayed, Head of School

b. being within 6 feet for a cumulative duration of 15 minutes, while not wearing a mask or face shield; if either occurred at any time in the last 14 days at the same time the infected individual was infectious.

Individuals are presumed infectious at least two days prior to symptom onset or, in the case of asymptomatic individuals who are lab-confirmed with COVID-19, two days prior to the confirming lab test.

Screening Questionnaire Information

1. When asking individuals if they have symptoms for COVID-19, school will only require the individual to provide a “Yes” or “No” to the overall statement that they are symptomatic for COVID-19, as opposed to asking the individual for specific symptom confirmation. ISI is not entitled to collect information during screening on the specific health information of an individual beyond that they are symptomatic.
2. Once it is determined that individuals who responded “Yes” to either of these questions have met the criteria for re-entry, ISI will destroy those individuals’ responses.

Instructional Models

Virtual School Model:

Select one option It will have full accountability and scheduled to be followed, like a regular school day. It will be remote learning from home that will start Aug. 12, 2020. Please note Virtual Learning will have two remote learning options, synchronous and asynchronous. PreK – second grade who choose remote learning will be required to choose the asynchronous option. Students in grades 3-12 may choose either option. Here is the link to Texas Education Virtual Learning Model:

https://tea.texas.gov/sites/default/files/covid/overview_of_remote_instruction_guidance_for_sy_20-21.pdf

• **Synchronous Remote Learning** – Students will follow the school schedule. Students will learn together at the same time via instruction with the teacher via live video chat, Zoom, etc. Communication happens in real time and allows for more engagement, instant feedback and clarification.

• **Asynchronous Remote Learning** – Students will learn at different times at their own pace. Teachers will be providing the instruction on their scheduled time and students may attend the session at their pace. Asynchronous remote learning allows students to work at their own pace since communication may not happen in real time. Instruction is provided via email, videos, blog posts and comments. Asynchronous learning provides more flexibility during the day.

Normal School Model:

In this option, students will attend school all days of the weeks through face-to-face instruction in the 2020-21 school year. A number of enhanced health and safety protocols will be in place to help prevent the spread of COVID-19

For attendance purposes, the expectation is that all students will be participating in every class activity either Virtually (Synchronous or Asynchronous) or at campus. This school year attendance will be taken by all subject teachers at every grade level via various forms of participation to count a student as present. This may include but not be limited to:



Islamic School of Irving

College Preparatory

2555 Esters Rd. Irving, TX 75062 Phone: 972-812-2230

Today's Learners, Tomorrow's Leaders



Shahnaz Chowdhury, MS. Principal

Dr. Leila Kayed, Head of School

- Participating in a live class virtual discussion
- Submitting written assignments by the end of the school day (3:00 PM Mon-Friday)
- Posting or commenting on a discussion board
- Logging time in a school-sponsored individual practice (e.g. Google Classroom or any other trackable, online resource)
- Absence notification will be sent to the parents by 4:00 PM if the daily assigned works are not submitted
- Absence notification will include information on classes students didn't attend.
- Late submission of the daily assigned work will incur tardy.

The following steps will be everyday for safety:

- Mandatory training for COVID-19 will be given to all returning and new staff and faculty by professionals.
- Full time nurse will be on duty during school day
- Masks or face shields will be required for all present in the building at all times.
- Individuals entering the building will be screened for temperature
- Social distancing will be practiced
- Bathroom visits will be monitored; no more than 4 at a time
- All suspicious cases of COVID-19 will be reported
- Recommended: parents purchase clear screen dividers to be placed on student desks
- Desks will be placed strategically to maximize social distancing
- Teachers, rather than students, will be moving room to room.
- Sanitizing stations will be installed at high traffic entrances and exits
- Hand sanitizers will be available in each classroom.
- Students will eat lunch and snack in their respective classrooms
- Students will bring their own water bottles, lunch and prayer rugs
- All field trips will be cancelled this year until TEA permits
- Staff will ensure social distancing in playground and gym. Students will bring their own equipment, i.e. ball, jump ropes, etc.
Use of playground equipment will not be allowed.

ISI COVID-19 Taskforce

Dr. Tarek Salman

Dr. Afia Umber

Dr. Mohammad Qasim

Sr. Shahnaz Chowdhury, Principal

Sr. Anita Abrashid, LT

Sr. Brenda Bleakney, LT

Br. Khalil Jourane, LT

Sr. Mouna Ajjaoui, Nurse